A photograph of a modern house at dusk. The house features large glass windows and doors, some of which are illuminated from within, casting a warm glow. A long, covered walkway with recessed ceiling lights extends from the foreground towards the house. In the foreground, there is a swimming pool with a concrete deck and a low wall. The sky is a deep blue, and the overall atmosphere is serene and sophisticated.

100 more
of the world's best
houses

images
Publishing

Edited by Robyn Beaver

Chicago Town House

Chicago, Illinois, USA

ALEXANDER GORLIN ARCHITECTS

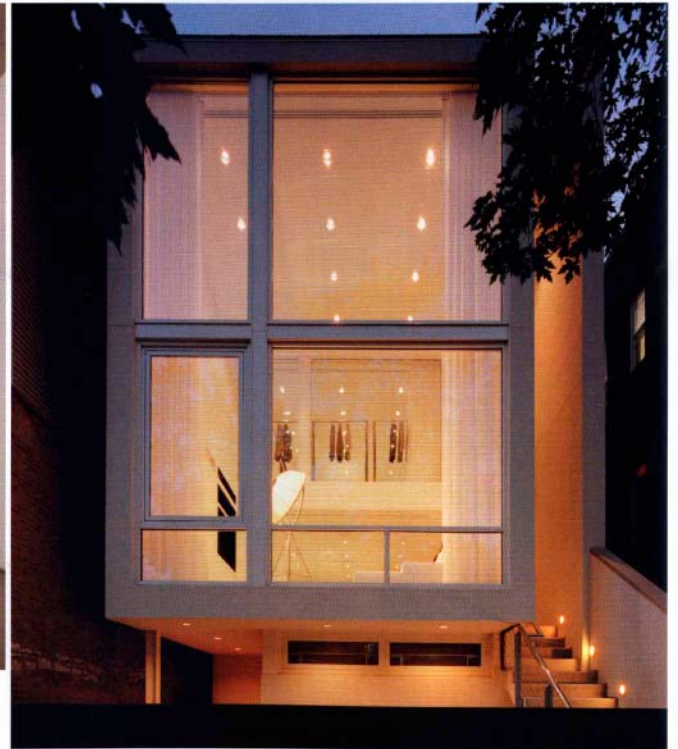
74

This town house for a bachelor in the Bucktown district of Chicago is a gleaming modern structure that floats above its more traditional neighbors. Set back behind a brick-walled garden, a steel and stone stair cuts through the volume of the house leading directly from the street to the main living level on the second floor and beyond to the third level and roof terraces above. On the main level, a double-height space contains the open loft of the kitchen, living, and dining areas. The vertically oriented living room is framed by large expanses of glass, which open onto the garden below and provide views of the street.

Above, the suspended glass box of the master bedroom and bathroom floats. The sensual space of the glass shower and freestanding tub is directly open to the master bedroom, blurring the boundaries between these traditionally separate areas. At both ends, glass walls afford views of the city. The clothes closet is completely open to view, where the client's perfectly coordinated suits hang for all the world to see, allowing him to "shop" daily for his suit of choice—recalling perhaps a scene from *American Gigolo*. Above is a terrace with views to downtown Chicago. A luminous screen of parachute cloth curtains—a theatrical gesture—defines the space of the dining room, with its own terrace above the garage. On the lower level are a guest bedroom and an exercise space. Materials are limited to a minimally cool palette of white painted steel, white statuary marble for all counters, gray-toned stone floors from China, and white plaster walls.



1



2

- 1 Theatrical setting of dining room with translucent parachute cloth curtains
- 2 & opposite: Floating cube of light: façade from Paulina Street





8



9





10



11

- 4 Roof plan
 - 5 Second floor plan
 - 6 First floor plan
 - 7 Ground floor plan
 - 8 View from dining room to kitchen and living room
 - 9 Bathroom perpetuates home's theme: cubes of glass and light
 - 10 Living room with view to bedroom and wardrobe/privacy screen
 - 11 Skylight, stair to bedroom and rear terrace
- Photography: Michael Moran